

Product Value DNA



SEM816D Specification

Flywheel Power : 160Hp
 Machine Weight : 17,230kgs
 Ground Pressure : 68kPa
 Powertrain : Hydrostatic
 Blade : Semi-Universal



LEARN MORE

COMFORT

- Pilot control with low level efforts to reduce operator fatigue
- Single joystick with multi-function controls to all travel movements
- Adjustable suspension seat, backrest, and armrest offers the most operator comfort



LOW OPERATING COST

- Load sensing hydraulics reduce system heat and fuel consumption
- Close center drivetrain system reduces fuel consumption
- Deceleration using brake pedal decrease engine rotation (RPM) to save fuel when braking



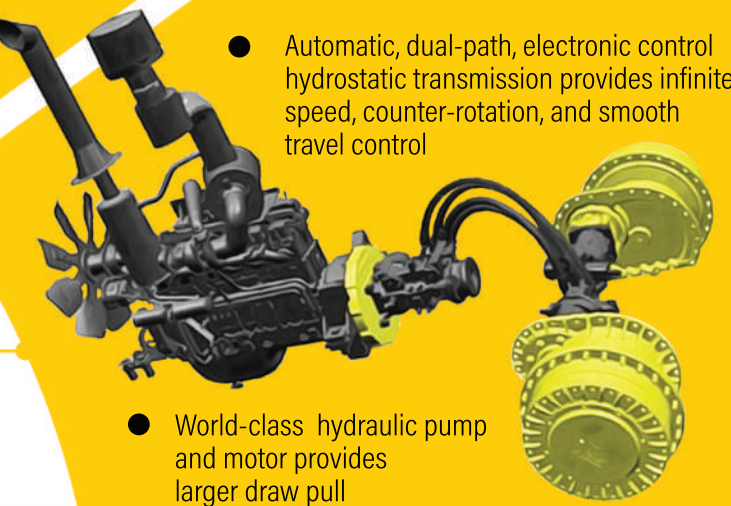
SAFETY

- Handrails and non-skid steps for three points contact
- Emergency parking brake and working system lock function
- More lights in front and rear provides better visibility at night
- ROPS & FOPS cab option



PRODUCTIVITY

- Automatic, dual-path, electronic control hydrostatic transmission provides infinite speed, counter-rotation, and smooth travel control
- World-class hydraulic pump and motor provides larger draw pull
- 3610mm Turning Radius



RELIABILITY



- Undercarriage is provided by Asiatrak (A Caterpillar Company) ensures high reliability and resistance to wear
- Carrier rollers track rollers and idle rollers are all maintenance free
- Planetary final drive design delivers increased torque ratio for higher transmission efficiency and lower maintenance cost.

